

Cello

Louise Farrenc

*Première Ouverture
a Grand Orchestre*

Opus 23

Susan Pickett, editor

HILDEGARD PUBLISHING COMPANY®

Box 332, Bryn Mawr, PA 19010

LOUISE FARRENC

Parisian-born Jeanne-Louise Dumont (1804-1875) showed an obvious musical gift at an early age, and received excellent training in both piano and composition. She married Aristide Farrenc, a flautist and music publisher, in 1821 and enjoyed a long and distinguished career as a pianist, composer, and pedagogue.

Most of Louise Farrenc's compositions are for solo piano; other works include three overtures, three symphonies, 4 piano trios, 2 sonatas for violin and piano, a cello sonata, a string quartet, 2 piano quintets (piano, violin, viola, cello, bass), a sextet, and a nonet. Most of her piano and chamber compositions were published by Aristide Farrenc, and many were simultaneously printed by other publishers in England and Germany. However, none of her orchestral music, including the *Première Overture*, was ever published. This piece was composed in August, 1834. It was performed at least once, in 1835. The manuscript of the full score is in the Bibliothèque Nationale in Paris.

EDITORIAL NOTES

Important: in a few places, contradictory dynamic markings are shown. Those in parentheses are the editor's. The conductor should clarify which dynamic markings are desired. All tenuto and staccato markings are editorial.

Dr. Susan Pickett
Catharine Chism Professor of Music
Whitman College
Walla Walla, WA 99362

March 1997

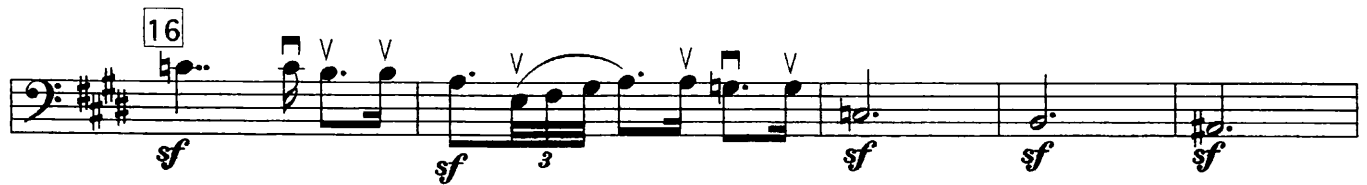
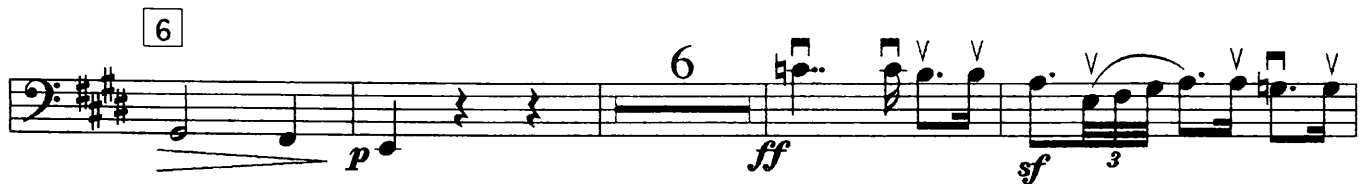
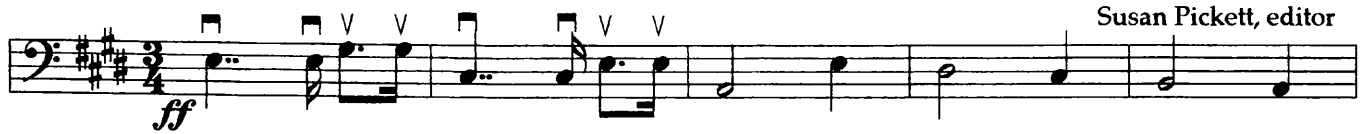
Première Ouverture

cello

Adagio (♩ = 60)

Louise Farrenc

Susan Pickett, editor



© Hildegard Publishing Company 1997

All rights reserved

Reproduction without permission is illegal

p. 2 cello

55 *sf* *sf*

61 *ff*

66

71 3 *pp* V V

82 V

91 *dim. e rit.*

98 *a tempo* V *f (ff)* *sf*

104 V *f (ff)*

110 *sf* *sf*

115 *p*

123

p. 3 cello



131



137



144



151



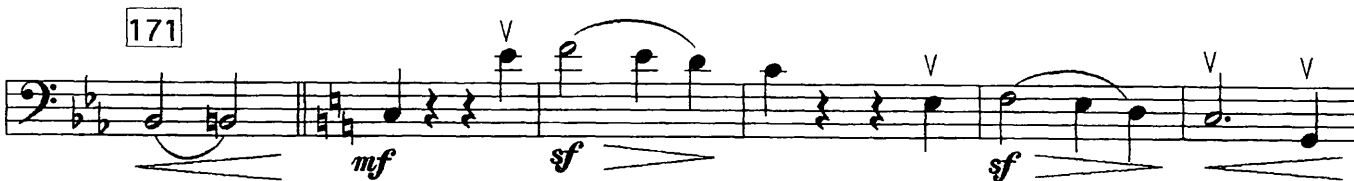
158



165



171



p. 4 cello

177



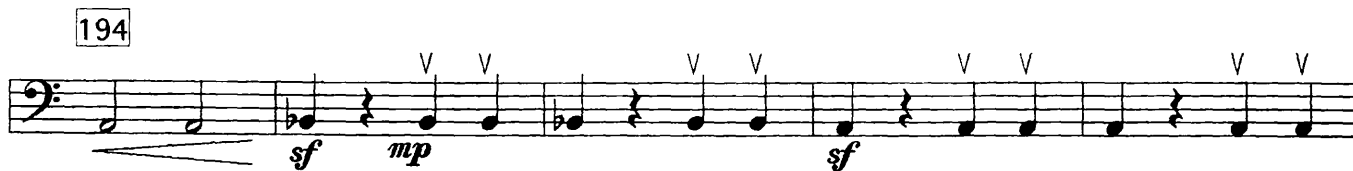
182



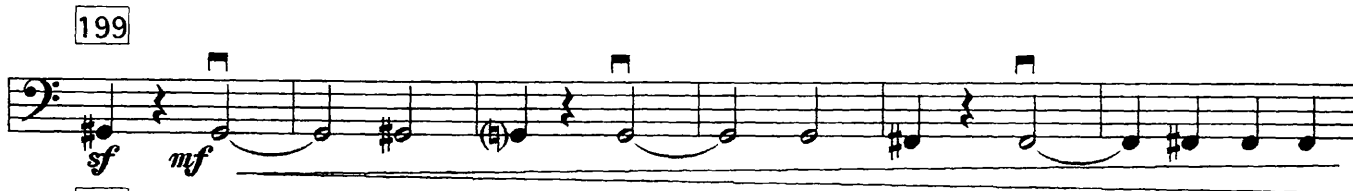
187



194



199



205



211



217



This page left blank
to facilitate page turn.

p. 5 cello

226



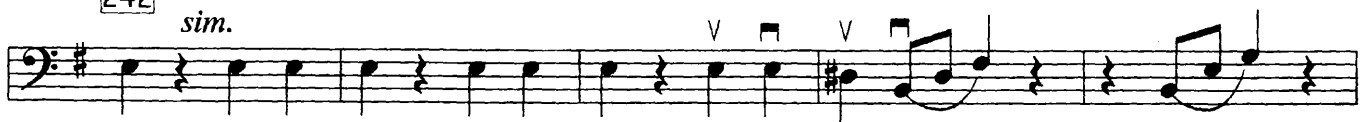
231



236



242



247



252



257



263



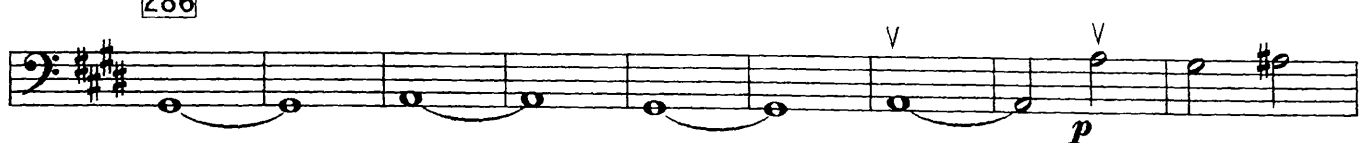
271



278



286



295

p. 6 cello

dim. e rit.